

01 This Days Bay house is on a steep north-facing site clad with mature beech.



PROJECT

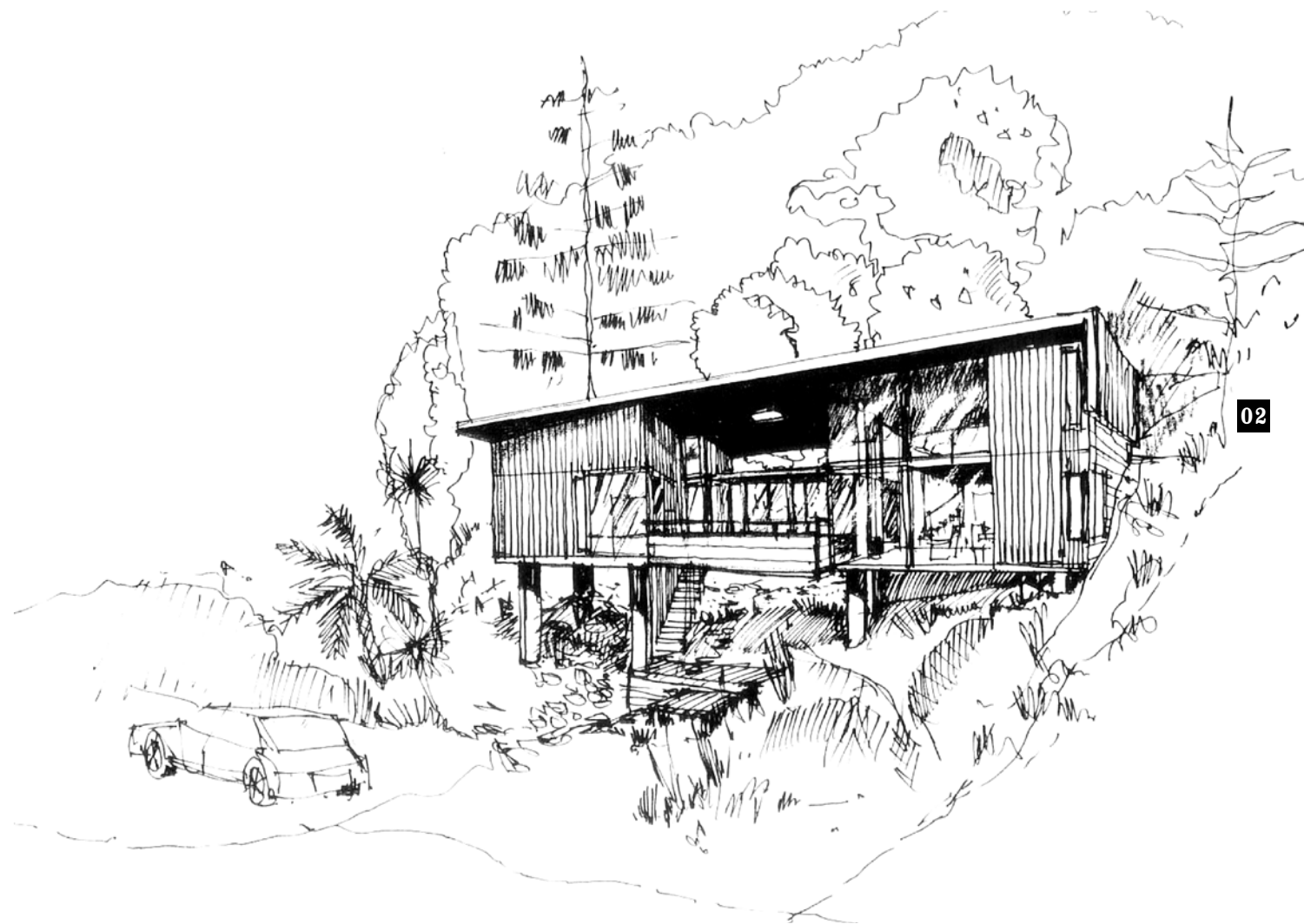
# 01

## *Days Bay* **HOUSE** by **Bevin+Slessor** **Architects**

• WELLINGTON •

Ric Slessor has designed an “apartment in the bush” on a difficult steep site that made the owner and young family happy.

Photography by [Paul McCredie](#)



02


**please close up space  
a bit between drop cap  
and text**

**T**he brief for this site called for living spaces to engage with the views and sun, and connect with the bush behind. Though a relatively small scale, the design was also to have consideration for three young children being at home for half the week. The small footprint reflected both the house budget and the complex nature of the land.

The steep north-facing site is clad with mature beech, and has a protected rimu and a small stream running through the centre. The view captures the crescent of Days Bay, and the quickly rising bush-clad ridge across the valley of the bay. The location is well sheltered from wind with good sun. This factor became an important consideration allowing the core of the house to be organised around a covered deck.

A simple monopitch roof sloping west to east encompasses the two levels at the western end, the central covered deck, the link space with its separate lower roof and the small bedrooms to the east wing. Each bedroom has a small mezzanine.

The house was conceived as two wings – the children’s bedroom wing and the main living wing above and a narrower link space between. The link space bridges the stream below and opens to the covered main deck to the north and the deck to the south looking back up to the bush.

The bedroom wing is constructed on four large concrete piles with a concrete rib floor. The rationale was to keep the underside of the house relatively free of structure and clutter. The dark-stained concrete floor was selected throughout for both durability over the stream and thermal performance. The owner, builder and architect worked closely on the project, and the result is described as a credit to the owner’s trust and patience. 

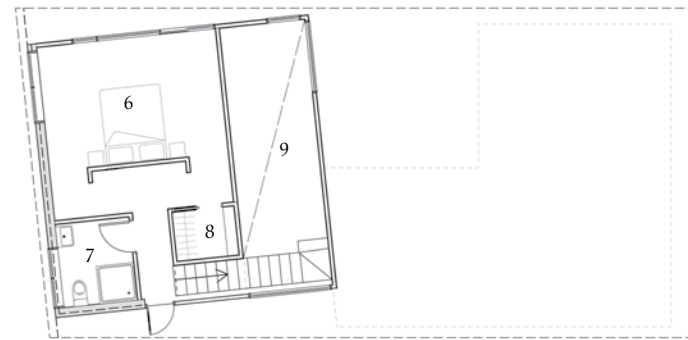
**02** An early design sketch of the Days Bay House, designed by Ric Slessor.

**03** The location is well sheltered from wind, an important factor with the house organised around a deck.

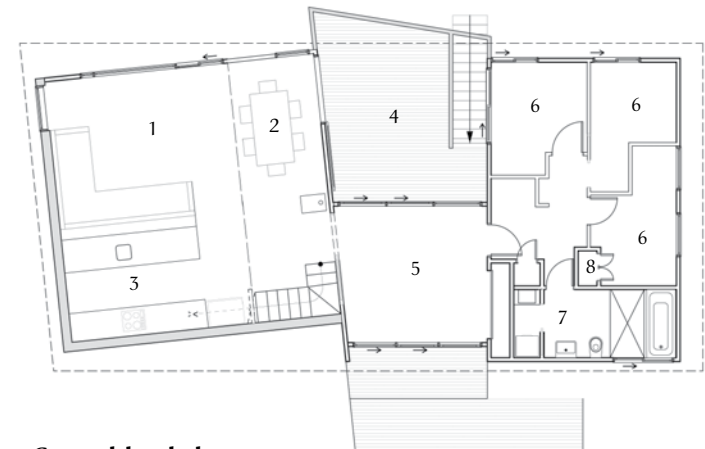




- 04 A stairway slips behind the shelving unit and concealed pantry. The exterior cladding is carried through to the interior elements.
- 05 The simply laid-out kitchen and living space are organised around the view.



Level-one plan



Ground-level plan

- 1 Living
- 2 Dining
- 3 Kitchen
- 4 Outdoor room
- 5 Study
- 6 Bedroom
- 7 Bathroom
- 8 Robe
- 9 Void



06 The covered central deck allows for its use in most weathers.

07 Looking through the central deck and the link space between the living and bedroom areas.



08 The double height connects the mezzanine main bedroom space with the morning light and the living and deck areas.

09 The mezzanine space looking eastward to the valley and over the double-height space.



**Architect**  
**Bevin+Slessor Architects**  
 Level 2/92 Dixon St  
 Wellington  
 04 568 8669  
[www.bevinslessor.co.nz](http://www.bevinslessor.co.nz)

**Practice profile**  
 Bevin+Slessor Architects is a design-focused practice seeking to provide innovative and contemporary architectural solutions. Its work is predominantly residential, with a range of community, hospitality and winery projects.

**Project team:**  
 Ric Slessor, Monique Addis

**Engineer**  
 Clendon Burns & Park

**Builder**  
 Scott Tindle

**Products**  
**External walls:** Vertical shiplap cedar; Shadowclad plywood  
**Floors:** Dark-stained concrete slab on precast ribs  
**Windows and doors:** APL Residential and Metro series  
**Ceiling:** Painted grooved ecoply  
**Roof:** LT7 0.7 aluminium; butynol  
**Blockwork, interior:** Honed standard firth block  
**Lighting:** Reil Lighting; David Trubridge  
**Built-in sofa:** Kadima

**Time schedule**  
**Design and planning:**  
 2006–2008  
**Construction:** 9 months

**Project areas**  
**Floor area:** 146m<sup>2</sup>  
**Central deck:** 20m<sup>2</sup>

